

Faculty – preliminary:

PD. Dr. Elisabeth Bruder

Leitende Ärztin
Universitätsspital Basel - Pathologie
Schönbeinstr. 40, CH 4031 Basel
elisabeth.bruder@unibas.ch

Prof. Aurore Coulomb, MD, PhD

Chef de service Anatomie et cytologie Pathologiques
Hôpital Armand-Trousseau
26 Avenue du Docteur Arnold-Netter, 75012 Paris
aurore.coulomb@trs.aphp.fr

Megan Dishop, MD

Childrens Minnesota
Medical Director Pathology (anatomic)
2525 Chicago AVE S B600, Minneapolis, MN 55404
Megan.Dishop@childrensmn.org

Dr. Ulrike Gruber-Mösenbacher

FA für Pathologie/Zytodiagnostik
Winzerweg 3
6800 Feldkirch, Austria
ulrike@gruber-moesenbacher.at

Prof. Dr. Annette M. Müller

Leiterin Zentrum für Kinderpathologie und Pathologie
MVZ Venusberg und
Oberärztin Institut für Pathologie
Universitätsklinikum Bonn
Sigmund-Freud-Str. 25, 53127 Bonn
annette.mueller@ukb.uni-bonn.de

Prof. Dr. Helmut H. Popper

Leiter Forschungseinheit für Molekulare Lungen- und
Pleurapathologie
Institut für Pathologie
Auenbruggerplatz 25, 8036 Graz, Austria
helmut.popper@medunigraz.at

Dr. Simone Reu

Ludwig-Maximilians-Universität München
Pathologisches Institut der LMU
Marchioninstr. 27, 81377 München
simone.reu@med.uni-muenchen.de

general information

Time: Saturday, 24 September, 2016;
09:30 a.m. – 17:00 p.m.

Location: University Clinic of Bonn, Teaching building ,

Address: University Clinic of Bonn,
Sigmund-Freud-Straße 25, 53127 Bonn
MAP s. attachment

Getting there/ Transportation: A transfer pick-up bus from the entrance of the Cologne Conference Center (where the ESP Congress will take place, starting Sept. 25, 2016) will be provided:

Saturday, Sept 24th 2016, 8h00, Barmer Straße, Taxistandplatz between Tor G und Tor F- Eingang Süd (entrance south)

Dinner: Course-Dinner will take place at Restaurant „Basilico“ at Hotel Dorint-Venusberg (in walking distance)

CME accreditation: Credentials will be requested from the UEMS and Deutsche Ärztekammer

Presenters:

referents are asked to:

- » use MS power-point for their presentations
- » start the presentation with a declaration of disclosures.
- » send the title of the presentation (from the suggested topics in the preliminary program) to: ulrike@gruber-moesenbacher.at; cc: annette.mueller@ukb.uni-bonn.de
- » if available, we would be glad to receive an H&E slide per case for scanning: Dr. Ulrike Gruber-Mösenbacher - address s. Registration-Form

Conference Fee:

The fee of €180.- will cover meals (coffee breaks, lunch, dinner), renting of the room and additional equipment as well as bus transfer:

we ask you to send your fee via bank transfer – details in the registration form – a separate document (pdf)

payment at venue: € 200.-

Registration-Form:

<http://www.mvz-venusberg.eu/pathologie-1.html>

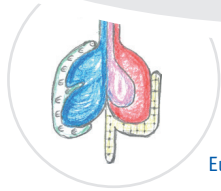


Meeting of the EuroPedPathLungNet

Pre-Course to the ESP Congress at Cologne

Saturday, 24 September, 2016
9h15 – 17h00

Dear colleagues



EuroPedPathLungNet

This Pediatric Pulmonary Pathology meeting in Bonn, which addresses all specialized pathologists and colleagues in training, this year will be structured as a collection of case presentations with subsequent survey on the topic.

By organizing case presentations we hope to cover as many childhood-lung-disease-entities as possible thus initiating lots of interactive discussions.

There will also be few impulse – lectures as frame of the meeting. We like to invite you to contribute to this meeting by choosing an example case of the suggested topics/entity-groups you would like to cover.

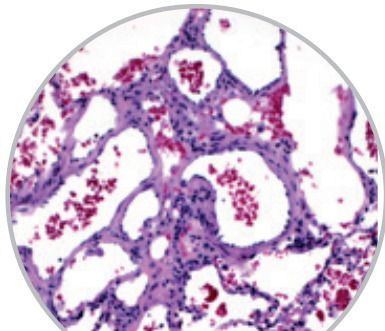
Please forward your registration - mail to Prof. Annette Müller and Dr. Ulrike Gruber-Mösenbacher.

the organizing committee of the 2016 meeting:

Prof. Dr. Annette Müller,
Bonn

Prof. Dr. Helmut Popper,
Graz, Austria

Dr. Ulrike Gruber-Mösenbacher,
Feldkirch, Austria



Preliminary Program

9h15 – 9h35

Introduction

H. Popper

9h35 – 9h50

Case - example of general malformations – Holt-Oram syndrome and aplasia, hypoplasia, congenital acinar/alveolar dysgenesis/dysplasia

N.N.

9h50 – 10h05

Case-example of general malformations – hypoplasia, growth arrest, immature lung lobules or subsegments associated with heart disease

N.N.

10h05 – 10h20

Case – general malformation: alveolar capillary dysplasia with/without misalignment of pulmonary veins

N.N.

10h20 – 10h35

Case-example of vascular malformations – hereditary hemorrhagic teleangiectasia (M. Rendue-Osler, Ehlers-Danlos syndrome type IV, Marfan-disease, diffuse and localized AV-anastomoses

N.N.

10h35 – 11h coffee break

11h – 11h15

Case example of vascular malformations – pulmonary arterial hypertension, veno-occlusive disease, anomalous systemic arterial supply including sequestration and Scimitar syndrome, anomalous venous return, angiomas

N.N.

11h15 – 11h35

Differential diagnosis of cystic lung lesions

Annette Müller

11h35 – 11h50

Case example of malformations of the airway system – immotile cilia syndrome; Monier Kuhn Syndrome, Birt-Hogg-Dube (BHD) syndrome,

N.N.

11h50 – 12h10

Inborn errors of metabolism: newly detected metabolic diseases in families in Reunion

Aurore Coulomb

12h10 – 12h30

Surfactant related disorders

Elisabeth Bruder

12h30 – 13h30 lunch

13h30 – 14h

Key-note lecture: New entities in pediatric pulmonary pathology

Megan Dishop

14h – 14h15

Case example of further inborn errors of metabolism – cystic fibrosis, glycogen- or lipid-storage diseases – Niemann-Pick syndrome, Gaucher´s disease

N.N.

14h15 – 14h35

Non- infectious interstitial pneumonia – NSIP/LIP, chronic pneumonia of infancy

Simone Reu

14h35 – 14h50

Case example of pneumonia in childhood – aspiration: gastric juice aspiration (Mendelson syndrome), nocturnal silent aspiration, chronic pneumonia of infancy, bronchopulmonary dysplasia

N.N.

14h50 – 15h05

Case example of pneumonia in childhood - autoimmune diseases, diseases of the immunocompromised host

N.N.

15h05 – 15h30 coffee break

15h30 – 15h45

Infectious pneumonias with special type of organisms

Ulrike Gruber-Mösenbacher

15h45 – 16h

Case example of pulmonary childhood tumours – adenocarcinoma, HPV-induced papilloma/papillomatosis

N.N.

16h – 16h15

pulmonary childhood tumours – pleuropulmonary blastoma

N.N.

16h15 – 16h30

lung malformations in chromosomal abnormalities- trisomies

N.N.

16h30 – 17h

Summary and closing remarks

Annette Müller